

ATLANTIC HURRICANE SEASON: JUNE 1 - NOVEMBER 30

**WE'RE READY
ARE YOU?**

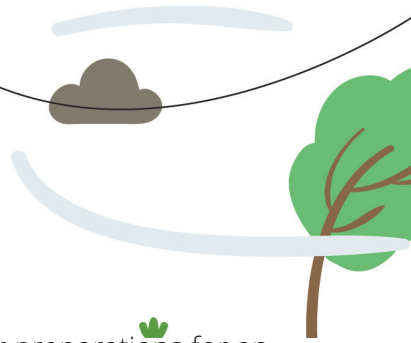
**WITHLACOOCHEE RIVER ELECTRIC
COOPERATIVE, INC.**

Your Touchstone Energy® Partner



**HURRICANE
PREPAREDNESS GUIDE**

Hurricane Preparedness Resources



Access these websites to complete your preparations for an incoming storm:

Withlacooche River Electric Cooperative

wrec.net

The Florida Division of Emergency Management

Learn about hurricane hazards, what to do when a warning is issued in your area, and how to prepare for a storm.

floridadisaster.org

The National Hurricane Center

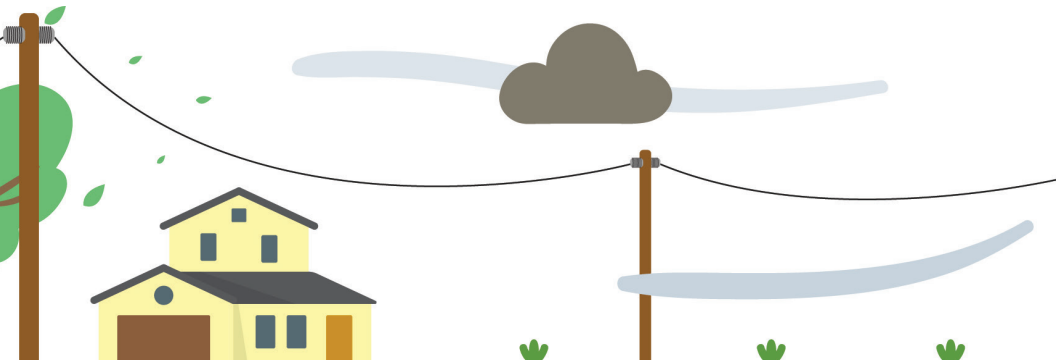
Follow the forecasted path of any active hurricane to determine if your home will be in an impacted area.

nhc.noaa.gov

Federal Emergency Management Agency (FEMA)

Apply for assistance after a storm hits, and learn about flood zones in your community.

fema.gov



**MAKE A
PLAN**



**PREPARE YOUR
EMERGENCY KIT**



**PREPARE YOUR
HOME**

To report an electrical outage in your area:



Phone
352.567.5133



SmartHub
Use the SmartHub app

To check your co-op's storm status:



Website
www.wrec.net



Facebook
WithlacoocheeRiverElectricCooperativeInc

Twitter
@WRECCoop

Instagram
@withlacoochee_river_electric

DOWNRIGHT DANGEROUS

A close-up photograph of several downed power lines lying on a dark asphalt surface. The lines are twisted and appear to be made of metal. Some dry leaves and small twigs are scattered around the lines. The background is blurred, showing more of the asphalt and some distant foliage.

STAY AWAY FROM DOWNED POWER LINES

Just because it's down doesn't mean it's not energized. If you encounter downed lines while driving, turn around. Lines may still be energized. Never drive near or over them.



HURRICANE PREPAREDNESS CHECKLIST

BE PREPARED BEFORE THE STORM

In the event of a power outage, be prepared by keeping the following items in an easy-to-find emergency supply kit.



WATER

Three-day supply, one gallon per person per day.



FOOD

Five-day supply of non-perishable food that requires little preparation and no refrigeration.



TOOLS

Flashlight, extra batteries, manual can opener, battery-powered or hand-crank radio, NOAA Weather Radio with tone alert.



FIRST AID & PRESCRIPTIONS

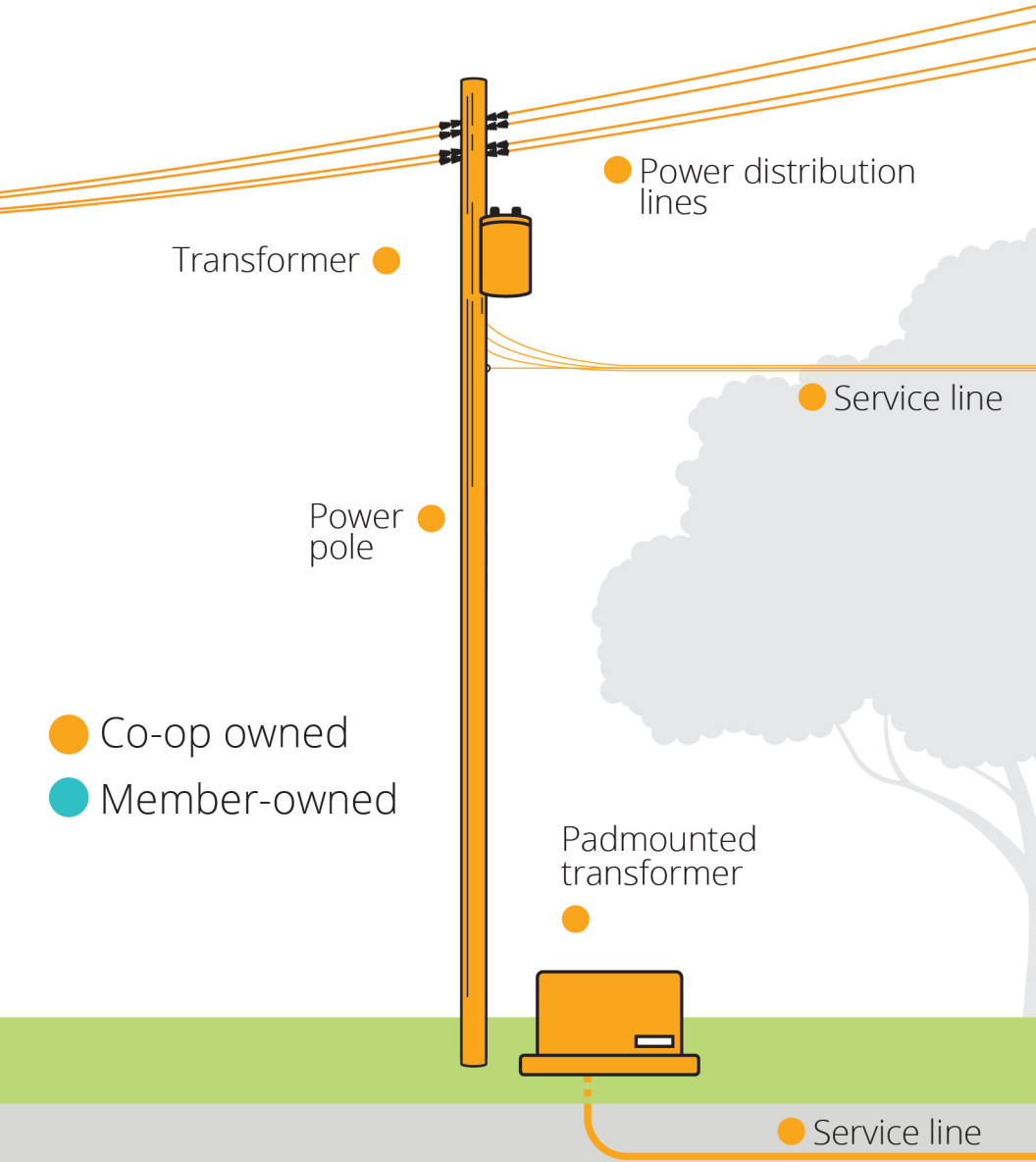
First aid supplies, hand sanitizer and at least one week's supply of prescriptions and medications for the family.

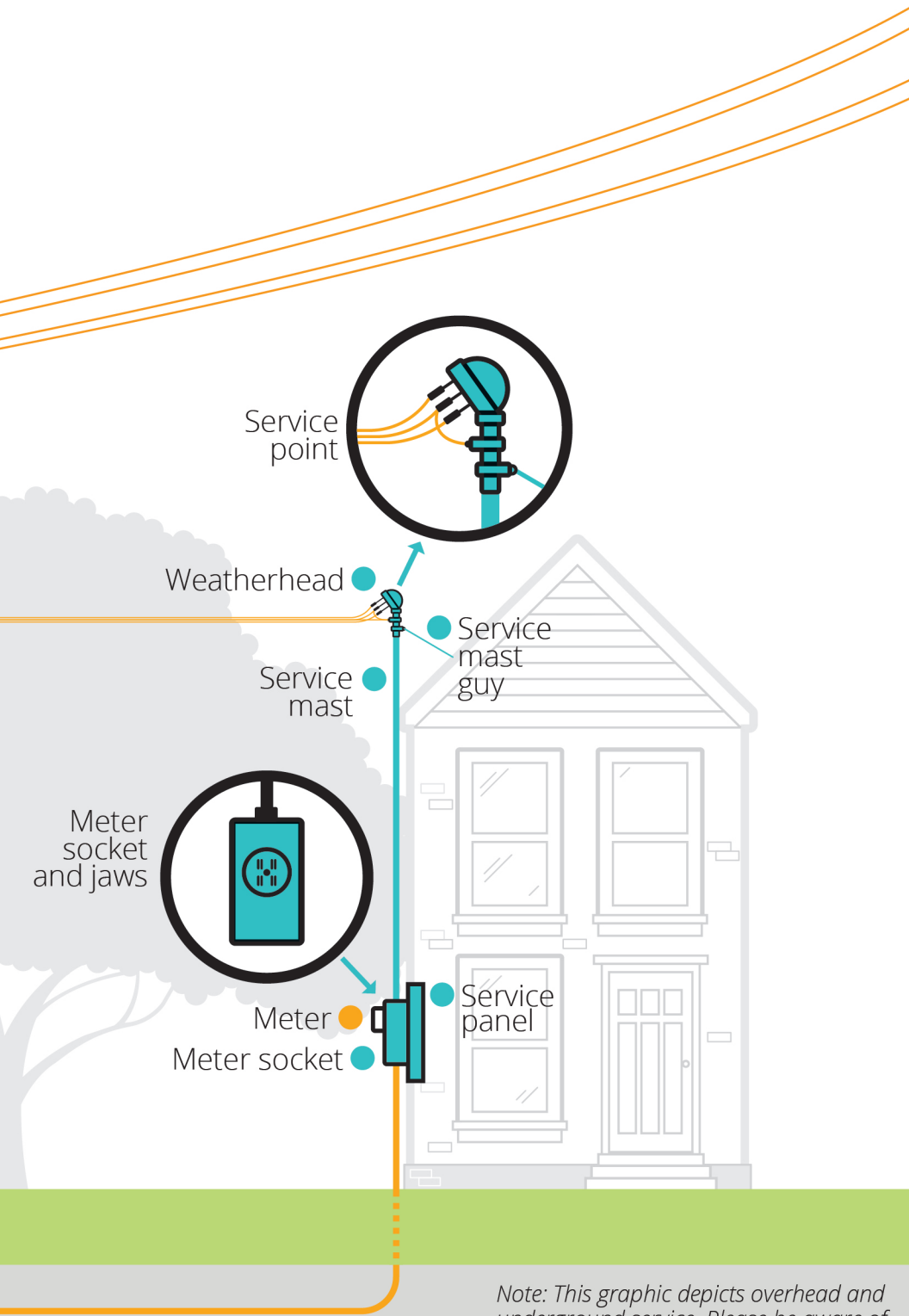
Source: American Red Cross, Federal Emergency Management Agency (FEMA).

Learn more at www.ready.gov

Who owns what?

If your electrical components are damaged, you may be responsible for repairs. Identify your type of service connection below to learn what your responsibilities are. You may need to complete repairs before power can be restored to your home.





Note: This graphic depicts overhead and underground service. Please be aware of which type of service you receive at your home or business.

Powering Up After An Outage

When a major hurricane causes widespread damage, extended outages may result. Our line crews work long, hard hours to restore service safely to the greatest number of consumers in the shortest time possible. A single pole, if damaged beyond repair, can take anywhere between 8 and 18 hours to replace.

Here's what's going on if you find yourself in the dark:





1. High-Voltage Transmission Lines

Transmission towers and cables supply power to transmission substations (and thousands of members), and they rarely fail. But when damaged, these facilities must be repaired before other parts of the system can operate.

2. Distribution Substation

A substation can serve hundreds or thousands of members. When a major outage occurs, our line crews inspect substations to determine if problems stem from transmission lines feeding into the substation, the substation itself, or if problems exist further down the line.

3. Main Distribution Lines

If the problem cannot be isolated at a distribution substation, distribution lines are checked. These lines carry power to large groups of members in our local communities.

4. Tap Lines

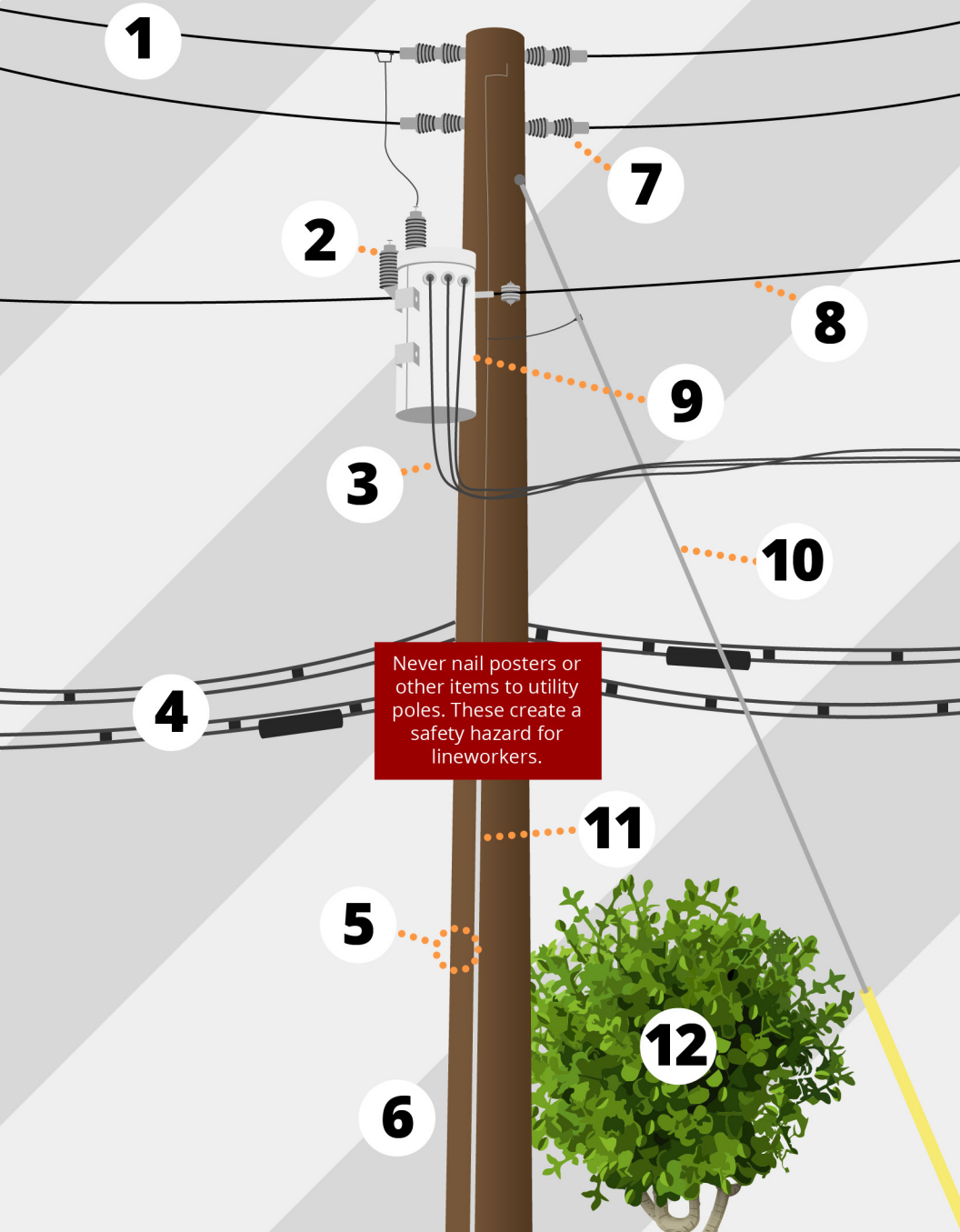
If local outages persist, supply lines (also known as tap lines) are inspected. These lines deliver power to transformers, either mounted on poles or placed on pads for underground service, outside businesses, schools, and homes.

5. Service Lines

If your home remains without power, the service line between a transformer and your residence may need to be repaired. If you experience an outage, please contact us so we can isolate the issue.

What's on a pole?

Equipment may vary based on location and the service provided. A single pole, if damaged beyond repair, can take anywhere between 8 and 18 hours to replace after a storm.



Never nail posters or other items to utility poles. These create a safety hazard for lineworkers.

- 1 Primary wires** run on top. Each carries at least 7,200 volts of electricity from a substation.
- 2 Surge arrestors** protect the transformer from lightning strikes.
- 3 A secondary service drop** carries at least 120/240 volts of electricity to the end user. It has two “hot” wires from the transformer, and a bare neutral wire connected to the ground wire on the pole.
- 4 Telephone and cable** TV lines are typically the lowest wires.
- 5 A head-high “birthmark”** shows the size of the pole as well as where and when it was made.
- 6 40-foot poles** are set **six feet** into the ground.
- 7 Insulators** (made of porcelain or a composite) prevent energized wires from contacting each other or the pole.
- 8 The neutral wire** acts as a line back to the substation and is tied to the ground, balancing the electricity on the system.
- 9 Transformers** convert higher voltage electricity from primary wires to lower voltage for use by consumers.
- 10 Guy wires** help stabilize poles. They are connected to the pole’s ground wire.
- 11 Pole ground wire** - running the length of the pole - connects to the neutral wire to complete the circuit inside the transformer. It also directs electricity from lightning safely into the earth.
- 12 Co-ops** are responsible for keeping **vegetation** around poles trimmed to avoid interference with the electric system.

Generate Safely - Safe Generator Operation

❑ Never connect a standby generator into your home's electrical system. There are only two safe ways to connect a standby generator to your equipment:

Stationary Generator An approved generator transfer switch, which keeps your house circuits separate from the electric co-op, should be installed by a professional.

Portable Generator Plug appliances directly into the outlet provided on the generator.

❑ Set up and run your generator in a well-ventilated area outside the home. Make sure it's out and away from your garage, doors, windows, and vents. The carbon monoxide generated is **DEADLY**.



❑ Use a heavy-duty extension cord to connect electric appliances to the outlet on the generator.

❑ Start the generator **BEFORE** connecting appliances.

*Source: SafeElectricity.org
Developed jointly by the Energy Education Council & Rural Electricity Resource Council*

MOVE OVER
or slow down for emergency lights.

KEEP OUR CREWS SAFE



IT'S THE LAW
#MoveOverFL